

International Canoe, ISO and Cherub Classes OPEN MEETING

Saturday 12th April and Sunday 13th April 2025

Organising Authority - Poole Yacht Club

Poole Harbour, UK

SAILING INSTRUCTIONS (SIs)

The notation '[DP]' in a rule of the sailing instructions (SIs) means that a boat may not protest another boat for breaking that rule. This changes RRS 60.1(a).

1 RULES

- 1.1 The event is governed by the rules as defined in *The Racing Rules of Sailing*.

2 CHANGES TO SAILING INSTRUCTIONS

- 2.1 Any change to the sailing instructions will be posted before 0900 on the day it will take effect, except that any change to the schedule of races will be posted by 2000 on the day before it will take effect.

3 COMMUNICATIONS WITH COMPETITORS

- 3.1 Notices to competitors will be posted on the official notice board located at the event noticeboard on the south side of the Poole Yacht Club clubhouse.

- 3.2 The race office is located at the Poole Yacht Club, telephone 01202 672687, email depngenmgr@pooleyc.co.uk.

- 3.3 A race briefing will be held at XX:30 on Saturday 12th April on the patio on the south side of the clubhouse.

- 3.5 [DP] From the first warning signal until the end of the last race of the day, except in an emergency, a boat shall not make voice or data transmissions and shall not receive voice or data communication that is not available to all boats.

4 CODE OF CONDUCT

- 4.1 [DP] Competitors and support persons shall comply with reasonable requests from race officials.
- 4.2 [DP] Competitors and support persons shall place advertising provided by the organizing authority in accordance with any instructions for its use.

5 SIGNALS MADE ASHORE

- 5.1 Signals made ashore will be displayed at the flagstaff on the south side of the Poole Yacht Club clubhouse.
- 5.2 When flag AP is displayed ashore, '1 minute' is replaced with 'not less than 30 minutes' in Race Signals AP.

- 5.3 [DP] When IC Flag D is displayed adjacent to the slipway with one sound, boats are requested not to leave the shore. The warning signal for the next race will not be made before the scheduled time or less than 30 minutes after flag D is removed.

6 SCHEDULE OF RACES

6.1

Class	Number	Races per day Scheduled	Races per day Maximum
<i>International Canoe</i>	<i>6</i>	<i>3</i>	<i>4</i>
<i>ISO</i>	<i>6</i>	<i>3</i>	<i>4</i>
<i>Cherubv</i>	<i>6</i>	<i>3</i>	<i>4</i>

- 6.3 The scheduled time of the warning signal for the first race each day is:

Date	<i>Warning signal for first race</i>
<i>12th April 2025</i>	Not before 12:00
<i>13th April 2025</i>	Not before 10:00

- 6.4 To alert boats that a race or sequence of races will begin soon, the orange starting line flag will be displayed with one sound at least five minutes before a warning signal is made.
- 6.5 On the last scheduled day of racing no warning signal will be made after 13:55.

7 CLASS FLAGS

7.1 The class flags are:

Class	Class Flag
<i>International Canoe</i>	<i>Class Insignia or Pendant No 1</i>
<i>ISO</i>	<i>Class Insignia or Pendant No 2</i>
<i>Cherub</i>	<i>Class Insignia or Pendant No 3</i>

8 RACING AREA

8.1 SI Addendum A shows the location of the racing area.

9 COURSES

9.1 The diagrams in SI Addendum B show the courses, including the approximate angles between legs, the order in which marks are to be passed, and the side on which each mark is to be left.

9.2 No later than the warning signal, the race committee signal vessel will display the approximate compass bearing of the first leg.

9.4 No later than the warning signal, the race committee signal vessel will display the letters and numbers signalling the course and number of laps to be sailed as shown in Addendum B.

10 MARKS

10.1 The course marks will be Orange Tetrahedral inflatable buoys.

10.2 The starboard end starting mark will be the race committee signal boat displaying an Orange flag. The port end starting mark will be a dan buoy displaying an Orange flag.

10.4 The starboard end finishing mark will be the race committee signal boat displaying a Blue flag. The port end finishing mark will be a dan buoy or boat displaying a Blue flag.

10.5 The spreader mark if laid will be a small cylindrical Orange buoy.

11 OBSTRUCTIONS

11.1 The following area is designated as an obstruction:

The area to the east of a line running North from "Cakes" mark (a yellow race mark), and to the north of a line running East from "Cakes" mark will be considered a "Prohibited Zone" (Addendum A) and an obstruction under rule 19, as this comprises the turning basin for the Port of Poole. This may also be marked by a Safety boat on station, depending on

conditions.

12 THE START

- 12.1 Races will be started using RRS 26 with the warning signal made 5 minutes before the starting signal. The class starts will be at 6 minute intervals
- 12.2 The starting line will be between a mast displaying an orange flag on the signal vessel at the starboard end and the course side of the port-end starting mark.
- 12.3 Boats whose warning signal has not been made shall avoid the starting area during the starting sequence for other classes.
- 12.7 A boat that does not start within 4 minutes after her starting signal will be scored Did Not Start without a hearing. This changes RRS A5.1 and A5.2.

13 CHANGE OF THE NEXT LEG OF THE COURSE

- 13.1 To change the next leg of the course, the race committee will lay a new mark (alternate windward mark) and remove the original mark as soon as practicable. When in a subsequent change a new mark is replaced, it will be replaced by an original mark.
- 13.2 The requirement to signal a change of course in accordance with RRS 33 does not apply if the race committee changes the angle of the next leg of the course by no more than plus or minus 10 degrees and/or extends or shortens its length by no more than 200 metres. This changes RRS 33.

14 THE FINISH

- 14.1 The finishing line will be between a mast displaying a blue flag on the finishing mark at the starboard end and the course side of the port end finishing mark.

15 PENALTY SYSTEM

- 15.1 RRS 44 applies.
- 15.3 RRS Appendix P applies

16 TIME LIMITS [AND TARGET TIMES]

- 16.1 The Mark 1 Time Limit, Race Time Limit (see RRS 35), and the Finishing Window are shown in the table below.

Race Target Time	Mark 1 Time Limit	Race Time Limit	Finishing Window
45 min	30 min	90 min	20 min

- 16.2 If no boat has passed the first mark within the Mark 1 Time Limit, the race will be abandoned.
- 16.3 The Finishing Window is the time for boats to finish after the first boat sails the course and finishes. Boats failing to finish within the Finishing Window, and not subsequently retiring, penalized or given redress, will be scored Time Limit Expired (TLE) without a hearing. A boat scored TLE shall be scored points for the finishing place two more than the points scored by the last boat that finished within the Finishing Window. This changes RRS 35, A5.1, A5.2 and A10.
- 16.4 Target time for the first boat to finish in each race will be 45 minutes. Failure to meet the Target Time will not be grounds for redress. This changes RRS 62.1(a).
- 16.5 In addition to the procedure for shortening course in RRS 32, the race committee may also award a finishing position to a boat that is still racing by displaying to her from a committee vessel (which may be in motion) flag W with one sound signal. A boat so notified is no longer required to sail the course (changing RRS 28.1), shall stop racing and shall return to the starting area, or return ashore if there is no more racing. Failure to take advantage of this provision may result in any following back to back race being started before that competitor has returned to the starting area. This shall not be the basis for a redress request under rule 62(a). This changes rule 35.
- 16.6 If a windward/leeward (L), triangle sausage (T), or sausage triangle (S) course is to be shortened at the leeward mark, the Committee Boat will display flag "S" with two sound signals as boats approach the leeward mark. Boats on that course will round mark 3 to port and proceed directly to the Finish Line (SI 14.1). This adds to RRS 32.

17 HEARING REQUESTS

- 17.1 For each class, the protest time limit is 60 minutes after the last boat in that class finishes the last race of the day or the race committee signals no more racing today, whichever is later. The time will be posted on the official notice board.
- 17.2 Hearing request forms are available from the race office at the south side of the clubhouse.
- 17.3 Notices will be posted no later than 30 minutes after the protest time limit to inform competitors of hearings in which they are parties or named as witnesses. Hearings will be held in the protest room, located at the Poole Yacht Club clubhouse beginning at the time posted.

18 SCORING

- 18.1 The scoring system will be as follows: RRS Appendix A.
- 18.2 One race is required to be completed to constitute a series.
- 18.3 (a) When fewer than 4 races have been completed, a boat's series score is the total of her race scores.

(b) When 4 or more races have been completed, a boat's series score is the total of her race scores excluding her worst score.

18.4 Rule A5.3 applies.

19 SAFETY REGULATIONS

19.1 [DP] A Safety Tally Number will be allocated to each boat when entering. The Tally Board will be situated at the top of the yacht marina slipway. Competitors intending to race shall contact the Beachmaster who will issue them with a rubber wrist band for the boat bearing their boat tally number which must be worn at all times whilst afloat. Immediately on reaching shore each helm shall report to the Beachmaster and surrender their wristband.

19.2 [DP] A boat that retires from a race shall notify the race committee at the first reasonable opportunity.

20 REPLACEMENT OF CREW OR EQUIPMENT

20.1 [DP] Substitution of competitors is not allowed without prior written approval of the Race Officer.

20.2 [DP] Substitution of damaged or lost equipment is not allowed unless authorized in writing by the Race Officer. Requests for substitution shall be made to the Race Officer at the first reasonable opportunity, which may be after the race.

21 EQUIPMENT AND MEASUREMENT CHECKS

21.1 A boat or equipment may be inspected at any time for compliance with the class rules, notice of race and sailing instructions.

21.2 [DP] When instructed by a race official on the water, a boat shall proceed to a designated area for inspection.

22 SUPPLIED BOATS

22.1 Not applicable

23 OFFICIAL VESSELS

23.1 Official boats will be marked/identified as appropriate. This will be defined during the race briefing on Saturday 31st May.

24 [DP] SUPPORT TEAMS

24.1 Team leaders, coaches and other support persons shall stay outside areas where boats of any class are racing from the time of the preparatory signal for the first start until all boats have finished or retired or the race committee signals a postponement, general recall or abandonment. Before the start of a race, all support boats shall stay at least 100m to leeward of the start line.

24.3 Support person vessels may be marked/identified as appropriate. This will be defined during the race briefing on Saturday 21st May.

25 TRASH DISPOSAL

25.1 Trash may be placed aboard official or support person vessels.

26 BERTHING

26.1 [DP] Boats shall be kept in their assigned places while in the boat park.

27 PRIZES

29.1 Prizes will be awarded to the winner of the event.

Other prizes may be awarded at the discretion of the organisers.

30 RISK STATEMENT

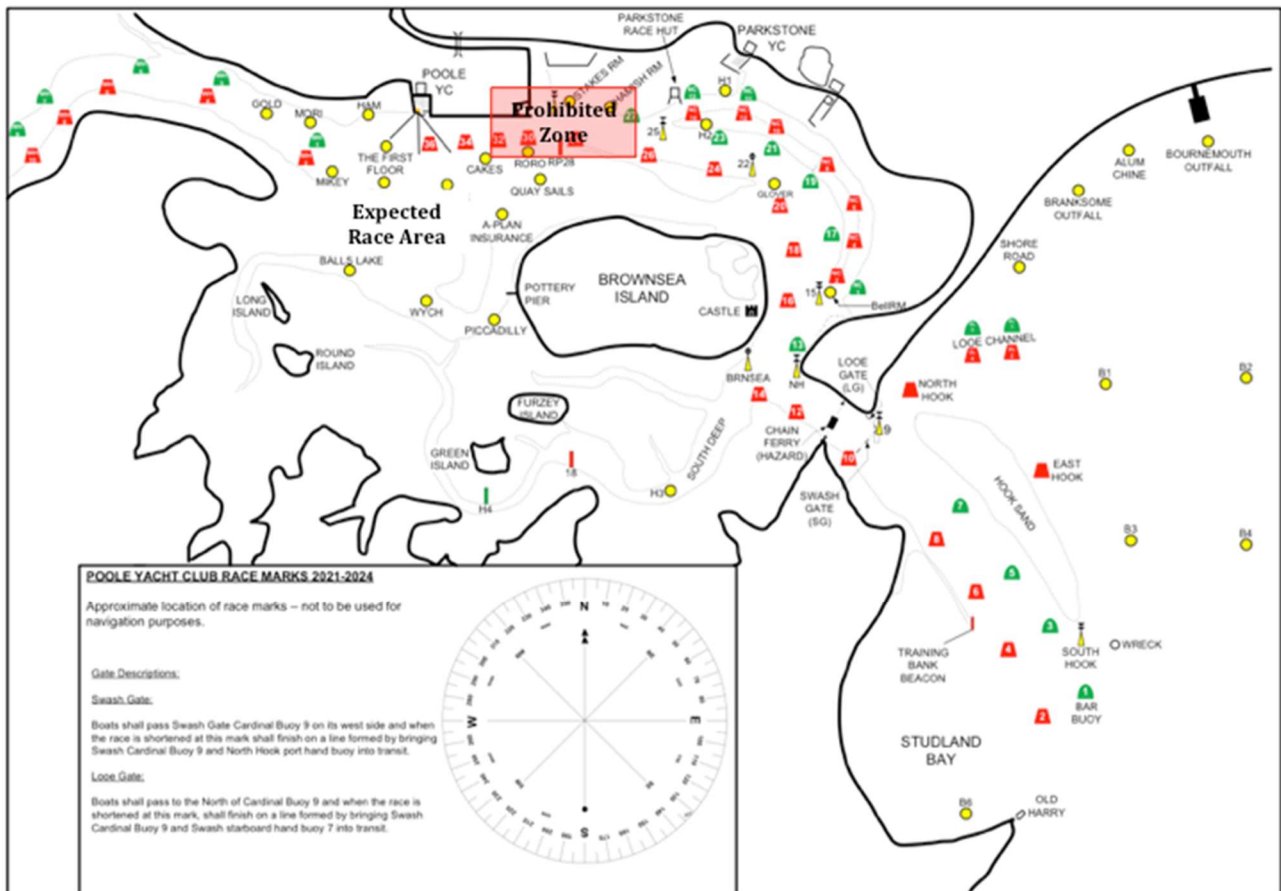
30.1 RRS 3 states: 'The responsibility for a boat's decision to participate in a race or to continue to race is hers alone.' By participating in this event each competitor agrees and acknowledges that sailing is a potentially dangerous activity with inherent risks. These risks include strong winds and rough seas, sudden changes in weather, failure of equipment, boat handling errors, poor seamanship by other boats, loss of balance on an unstable platform and fatigue resulting in increased risk of injury.

Inherent in the sport of sailing is the risk of permanent, catastrophic injury or death by drowning, trauma, hypothermia or other causes.

31 INSURANCE

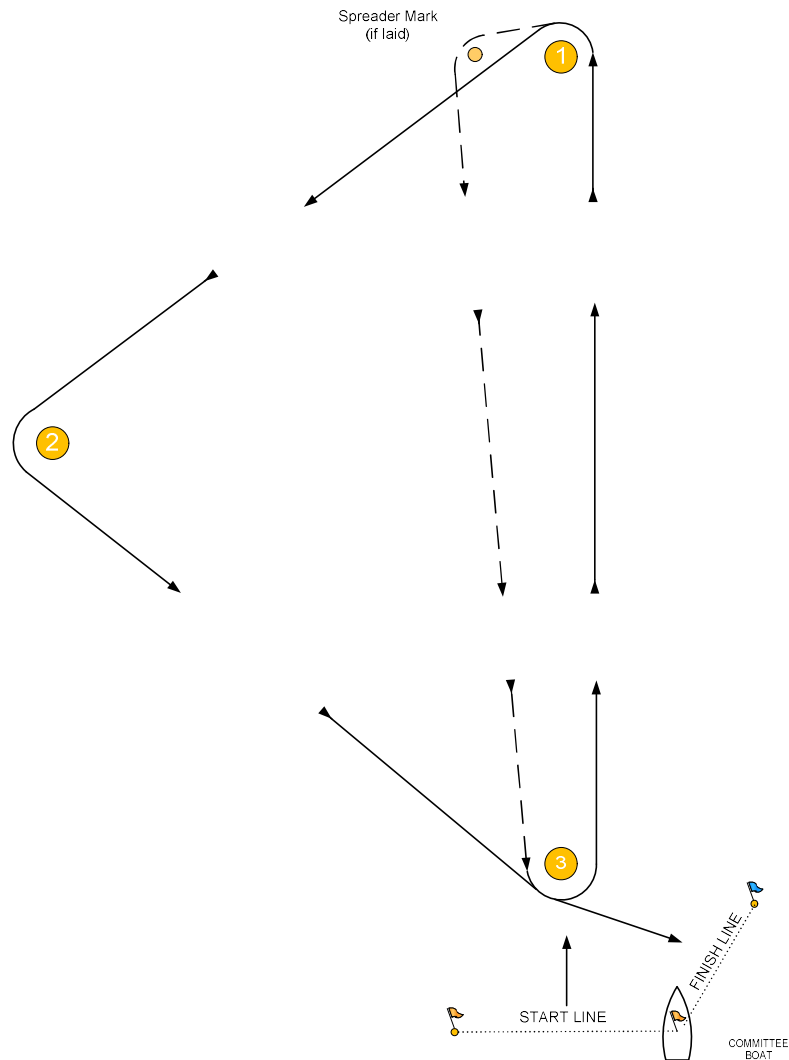
31.1 Each participating boat shall be insured with valid third-party liability insurance with a minimum cover of £3,000,000 per incident or the equivalent.

Addendum A – Race Area



Addendum B – Courses

The diagram shows the course and the **approximate** relative position of the marks of the course:



- 1) All marks of the course shall be left to **PORT**.
- 2) LAPS = T2: START – 1 – 2 – 3 – 1 – 3 – FINISH
S2: START – 1 – 3 – 1 – 2 – 3 – FINISH
L2: START – 1 – 3 – 1 – 3 – FINISH
- 3) LAPS = T3: START – 1 – 2 – 3 – 1 – 3 – 1 – 2 – 3 – FINISH
S3: START – 1 – 3 – 1 – 2 – 3 – 1 – 3 – FINISH
L3: START – 1 – 3 – 1 – 3 – 1 – 3 – FINISH
- 4) LAPS = T4: START – 1 – 2 – 3 – 1 – 3 – 1 – 2 – 3 – 1 – 3 – FINISH
S4: START – 1 – 3 – 1 – 2 – 3 – 1 – 3 – 1 – 2 – 3 – FINISH
L4: START – 1 – 3 – 1 – 3 – 1 – 3 – 1 – 3 – FINISH
- 5) If spreader mark is laid it shall be left to port on leg 1-3.