



The Craftinsure Osprey Championships 2024



5–8 September 2024

The Poole Yacht Club, Dorset, UK

The Organizing Authority is The Poole Yacht Club in
conjunction with the Osprey Class Association

SAILING INSTRUCTIONS

The notation '[NP]' in a rule of the sailing instructions (SIs) means that a boat may not protest another boat for breaking that rule. This changes RRS 60.1(a).

1 RULES

- 1.1 The regatta will be governed by the rules as defined in The Racing Rules of Sailing.
- 1.2 The Poole Harbour Bye Laws, available at <https://www.phc.co.uk> , apply.
- 1.3 Poole Harbour Sail Racing Procedures, available at <https://www.phc.co.uk/wp-content/uploads/2020/08/Poole-Harbour-Sail-Racing-Procedures-V.8-Aug-2020.pdf>, apply.

2 COMMUNICATIONS WITH COMPETITORS

- 2.1 Notices to competitors will be posted on the online official notice board at:
<https://www.pooleyc.co.uk/events/2024-9-5-osprey-national-championship-2024/>

2.2 Notices to competitors and other updates may also be repeated on the event WhatsApp Group. Should this information differ from the Official Notice Board online (see SI 2.1) then the Official Notice Board takes precedence. The Race Committee will provide details of its intentions by 09:30: for the racing area to be sailed each day; and updates regarding postponements, using the course WhatsApp group. Sign-up details of the Whatsapp group will be provided at registration. Failure to receive Whatsapp messages shall not be grounds for redress and changes RRS62.1(a)

2.3 Signals made ashore will be displayed from the flag mast on the south side of the clubhouse.

2.4 [DP][NP] Boats shall not leave the shore until flag D is displayed ashore on a flagpole adjacent to the slipway. The warning signal will be made not less than 60 minutes after flag D is displayed (30 minutes if racing inside Harbour).

2.5 Any change to the schedule of races will be posted by 19:00 on the day before it will take effect and any change to the sailing instructions will be posted at least 30 minutes before flag D is displayed (SI 2.3) on the day it will take effect.

2.6 [DP][NP] While racing, except in an emergency, a boat shall not make voice or data transmissions and shall not receive voice or data communication that is not available to all boats.

2.7 The class flag will be Naval Numeral 0.

3 SCHEDULE OF RACES

3.1 Dates of racing: 5 - 8 September 2024.

3.2 A total of 8 races (two races each day) will be scheduled. This may be altered depending on conditions with a maximum of 4 races on any day.

3.3 The scheduled time of the warning signal for the first race on 5 September is 13:00, and on other days is 11:30.

3.4 The warning signal for succeeding races will be made as soon as practicable.

3.5 To alert boats that a race will begin soon, the orange starting line flag will be displayed on the race committee boat with one sound at least five minutes before a warning signal is made.

3.6 On the last day of the regatta no warning signal will be made after 15:00.

4 RACING AREAS

4.1 Attachment A shows the location of racing areas '*Alpha*' (inside Poole Harbour) and '*Bravo*' (outside Poole Harbour in Poole Bay).

4.2 The area to be used will be posted each day on the official notice board and communicated via the event WhatsApp group. The first and last days will be in race area Alpha, and Friday and Saturday in race area Bravo if conditions allow.

4.3 **Danger Area:** The entrance to Poole Harbour is a narrow commercial ship channel with a passenger chain ferry crossing between Sandbanks and Studland. Tidal flow can be up to 4 knots so extra vigilance is necessary. A Poole YC safety rib will be on station near the chain ferry and competitors shall follow instructions from the safety rib.

Additionally there is a turning basin just to the east of the Poole YC Haven entrance. Competitors shall stay south of the line of red channel markers when traversing this area.

5 THE COURSES

5.1 The diagrams in Attachment B show the courses, the course designations, the approximate angles between legs, the order in which marks are to be passed, and the side on which each mark is to be left.

5.2 The gate 3s/3p may be replaced by a single mark to be left to port.

5.3 No later than the warning signal, the race committee signal boat will display the course designation and the approximate compass bearing of the first leg. A lead RIB may be utilised to aid familiarisation in the early races.

5.4 See SI 8

6 MARKS

6.1 Mark 1 will be a large orange inflatable buoy.

6.2 Mark 1a (offset windward mark) will be an inflatable orange buoy.

6.3 Marks 2, 3s and 3p will be orange inflatable tetrahedral buoys.

6.4 Starting marks will be the race committee signal boat at the starboard end, and a boat or buoy at the port end.

6.5 Finishing marks will be a race committee boat at the starboard end and a boat or buoy at the port end.

6.6 Alternate windward mark will be a large blue inflatable buoy.

7 THE START

7.1 The starting line will be between staffs displaying orange flags on the starting marks.

7.2 A boat that does not start within five minutes after her starting signal will be scored DNS without a hearing. This changes RRS 63.1 and A5

8 CHANGE OF THE NEXT LEG OF THE COURSE

8.1 To change the next leg of the course, the race committee will lay a new mark (alternate windward mark) and remove the original mark as soon as practicable. When in a subsequent change a new mark is replaced, it will be replaced by an original mark.

8.2. The requirement to signal a change of course in accordance with RRS 33 does not apply if the race committee changes the angle of the next leg of the course by no more than plus or minus 10 degrees and/or extends or shortens its length by no more than 200 metres. This changes RRS 33.

9 THE FINISH

9.1 The finishing line will be between staffs displaying blue flags on the finishing marks.

9.2 The race committee may award a finishing place to a boat by pointing flag W at her with a sound. The signalled boat shall be deemed to have finished, and the score awarded shall be

the position she occupied at the time of the signal. If two or more overlapped boats are signalled, they shall be scored as if they were tied. This changes RRS 28.1 and A3.

10 TIME LIMITS & TARGET TIMES

10.1 The time limit and target time in minutes for two races a day is as follows:

<i>Target Time</i>	<i>Time limit finishing window</i>
75	20

If more than 2 races are to be sailed in a day then the target time may be shorter (60 minutes) for those races.

10.2 The Finishing Window is the time for boats to finish after the first boat sails the course and finishes. Boats failing to finish within the Finishing Window, will be scored DNF without a hearing, unless SI 9.2 applies. This changes RRS 35, A5.1 and A5.2.

10.3 Failure to meet the Target Time will not be grounds for redress. This changes RRS 62.1(a).

11 HEARING REQUESTS

11.1 The protest time limit is 90 minutes for course area Bravo and 60 minutes for course area Alpha, after the last boat finishes the last race of the day or the race committee signals no more racing today, whichever is later. The time will be posted on the official notice board.

11.2 Hearing request forms are available at the race office.

11.3 Notices will be posted no later than 30 minutes after the protest time limit to inform competitors of hearings in which they are parties or named as witnesses, and the location where hearings will take place.

12 SCORING

12.1 Three races are required to be completed to constitute a series.

12.2 (a) When fewer than four races have been completed, a boat's series score will be the total of her race scores.

(b) When from four to six races have been completed, a boat's series score will be the total of her race scores excluding her worst score.

(c) When seven or more races have been completed, a boat's series score will be the total of her race scores excluding her two worst scores.

12.3 To request correction of an alleged error in posted race or series results, a boat may complete a scoring enquiry form available at the race office.

13 SAFETY REGULATIONS

13.1 [DP] RRS 40.1 (*Personal Flotation Devices*) shall apply at all times while afloat.

13.2 Check-out and check-in of competitors will apply as follows:

- (a) The tally control point to check-out and check-in competitors will be located at the slipway launching area.
- (b) Tallies comprise numbered rubber wristbands. Numbers will be allocated at registration, and posted on the official notice board. Tallies shall be worn visibly by all competitors, over clothing, on the right wrist, at all times while afloat.
- (c) [DP][NP] Competitors shall individually check-out by personally collecting their tally before racing each day.
- (d) [DP][NP] Competitors shall individually check-in immediately on returning to shore after racing, by personally returning their tally to tally control.

13.3 [DP][NP] A boat that retires from a race, or does not intend to start a race, shall notify the race committee before leaving the race area.

13.4 [DP][NP] Boats shall return to and remain in their assigned berths whilst ashore.

13.5 Breaches of the safety regulations will incur a standard penalty without a hearing, or a discretionary penalty after a hearing. The standard penalty will be 1 point for a first infringement, and 3 points for subsequent infringements, applied as in RRS 64.2. This changes RRS 63.1 and A5.

14 REPLACEMENT OF CREW OR EQUIPMENT

14.1 [DP] Substitution of competitors is not allowed without prior written approval of the race committee.

14.2 [DP] Substitution of damaged or lost equipment is not allowed unless authorized in writing by the race committee. Requests for substitution shall be made to the committee at the first reasonable opportunity, which may be after the race.

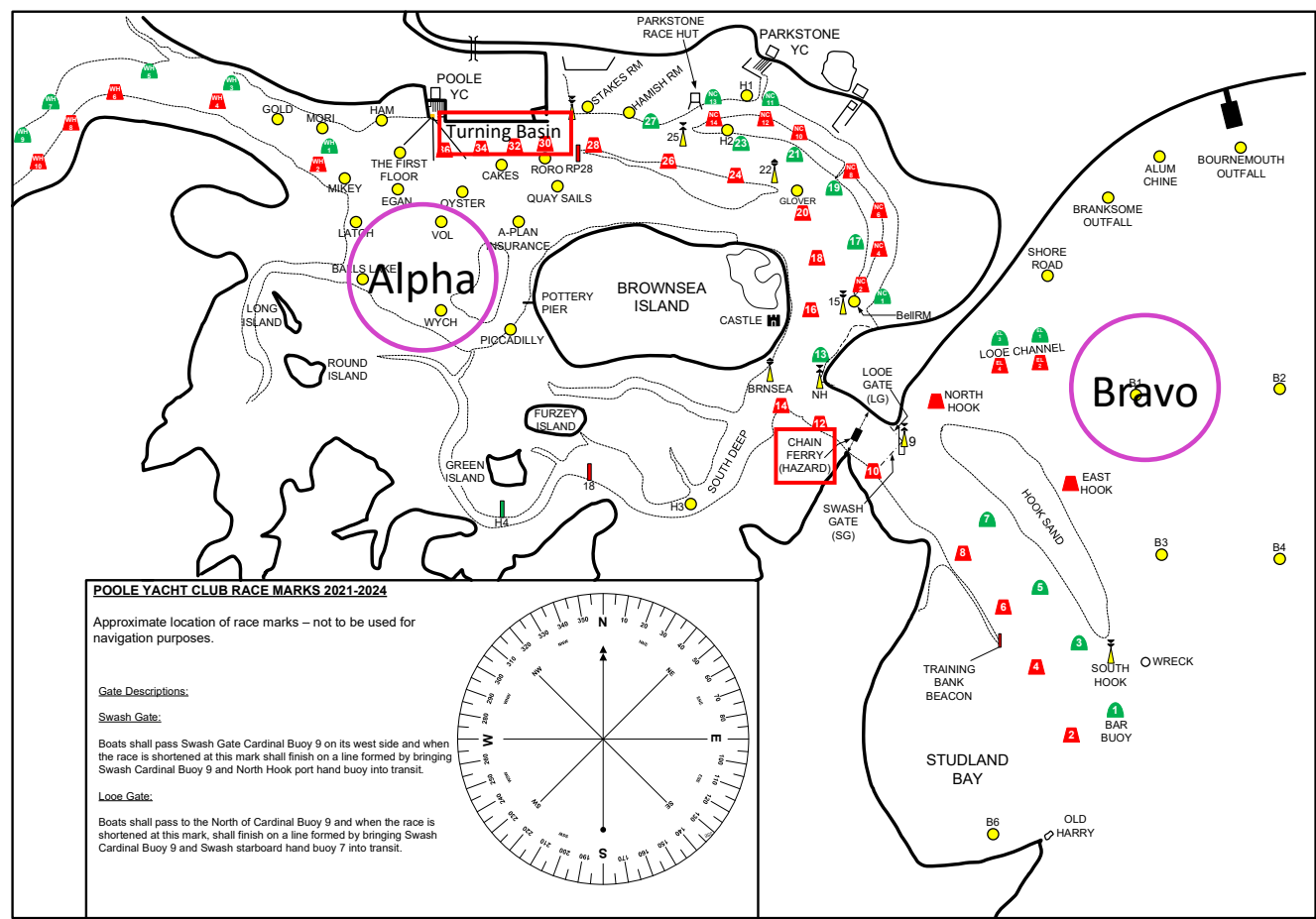
15 TIDAL INFORMATION

Tide Times (BST) at LAT 50°42'N / LONG 1°59'W (Poole):

Date	Low Water		High Water		Low Water	
	Time	Height (m)	Time	Height (m)	Time	Height (m)
Thu 05 Sep	06:20	0.57	11:10	2.24	18:40	0.80
Fri 06 Sep	06:50	0.65	11:40	2.20	19:00	0.84
Sat 07 Sep	07:40	0.73	12:10	2.09	19:30	0.88
Sun 08 Sep	07:50	0.83	12:10	1.95	20:00	0.95

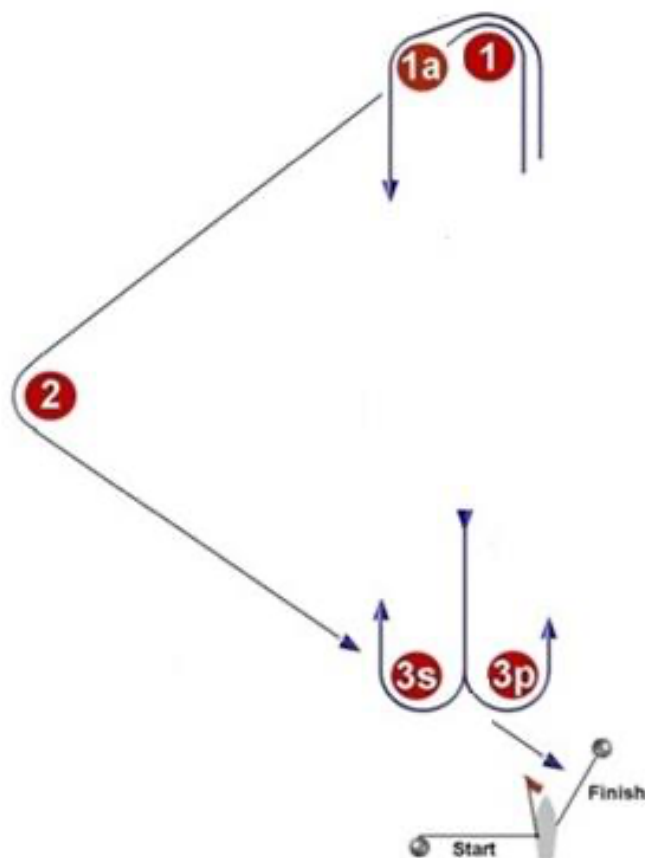
Attachment A

Location of Racing Areas



Attachment B

Windward/Leeward and Triangle Courses



Signal: **Mark rounding order:**

LT2 **Start – 1 – 1a – 3s/3p – 1 – 2 – Finish**

LT3 **Start – 1 – 1a – 3s/3p – 1 – 2 – 3p – 1 – 1a – 3p – Finish**

LT4 **Start – 1 – 1a – 3s/3p – 1 – 2 – 3p – 1 – 1a – 3s/3p – 1 – 2 – Finish**

TL2 **Start – 1 – 2 – 3p – 1 – 1a – 3p – Finish**

TL3 **Start – 1 – 2 – 3p – 1 – 1a – 3s/3p – 1 – 2 – Finish**

TL4 **Start – 1 – 2 – 3p – 1 – 1a – 3s/3p – 1 – 2 – 3p – 1 – 1a – 3p – Finish**

L2 **Start – 1 – 1a – 3s/3p – 1 – 1a – 3s/3p – Finish**

L3 **Start – 1 – 1a – 3s/3p – 1 – 1a – 3s/3p – 1 – 1a – 3s/3p – Finish**

L4 **Start – 1 – 1a – 3s/3p – 1 – 1a – 3s/3p – 1 – 1a – 3s/3p – 1 – 1a – 3s/3p – Finish**